

harr*gate at christmas

Festive shopping and fun in the heart of Harrogate

Christmas Street Lights



16th Nov-18th Jan

Switch-on Entertainment



4-6pm 16th Nov

Kids' Rides



16th Nov-19th Nov

Festive Windows



Nov & Dec 2017

Santa & Reindeer



16th Nov-19th Nov

Festive Music



16th Nov-19th Nov

FREE Shuttle Bus



Every 10 Min
16-19th Nov

Carol Service



6.15pm 16th Nov

To find out more about where to stay and what to do in the Harrogate area visit www.visitharrogate.co.uk

Published By Yorkshire Business Market Ltd
a not-for-profit company limited by guarantee, supporting Harrogate at Christmas
Tel: 01423 879208 E-mail: info@HarrogateChristmasMarket.org

Photos by Baxter Photography & Harrogate Advertiser

CM617v2

Artwork by COLOUR IT IN LTD www.colouritin.co.uk

get to the Harrogate Christmas Market by bus



36

TURN UP. GO.

LEEDS | HARROGATE
NOW EVERY 10 MINS

harrogatebus.co.uk
[@harrogatebus](https://twitter.com/harrogatebus)

Harr*gate Christmas Market

Thurs 16 - Sun 19 November 2017

Christmas Market VISITOR GUIDE

with a Yorkshire flavour
- fun for all the family!



200 Stalls



32 Chalets



Unusual Gifts



Leather Goods



Hot Snacks



Sweets & Cakes

St Mary's Walk, Montpellier Hill, Harrogate HG1 2RZ

Opening Hours:

Thurs-Sat 10am-8pm • Sun 10am-5pm

Find out more at:
www.HarrogateChristmasMarket.org

facebook.com/HarrogateChristmasMarket
twitter.com/HGChristmasMkt
instagram.com/hgchristmasmarket



Harrogate Christmas Lights: 'The Big Switch On' + Cheap Bus Travel!

Christmas officially begins in Harrogate with the Big Switch-On of the Christmas Lights on Thursday 16th November.

The build-up starts at 4pm on the Victoria Shopping Centre Piazza, Station Parade, sponsored by CNG and hosted by StrayFM.

A host of talented performers will keep the crowds entertained until Father Christmas joins the Mayor of the Borough of Harrogate, Councillor Anne Jones, to switch the lights on at 6pm.

After the Big Switch On, the Mayor and Father Christmas will lead a procession to St Peter's Church for a short Carol Service. Everyone is welcome to join them.

Take any Transdev bus into Harrogate after 4pm to see the Switch-on and then go home after 7pm for just £1 each way.

For full details of the Big Switch-On programme, visit

www.HarrogateAtChristmas.org



Harrogate Christmas Market: Visitor Guide

Harrogate's award-winning Christmas Market returns from Thursday 16th to Sunday 19th November, right in the heart of the town.

With about 200 traders selling mostly Yorkshire products, there is something for everyone:

- **Delicious Yorkshire food, drinks & confectionery**
- **Hand-made toys, clothes, hats & accessories**
- **Unique crafts, gifts and Christmas decorations**
- **Traditional mulled wine, roast chestnuts and more!**

Harrogate Christmas Market is a great day out for all the family. Visit Santa in his Grotto with live reindeer outside, enjoy the children's funfair and listen to the festive music provided by local performers in our busking area.

Join us for the Opening Ceremony:

Thursday 16th November, from 10am on Montpellier Hill.

Santa arrives on his sleigh drawn by reindeer, to officially open Harrogate Christmas Market with the Mayor of Harrogate!

SHOP LOCALLY - CELEBRATE LOCALLY!

Christmas in Harrogate

Whether you're looking for fantastic high street shopping, exclusive gift boutiques, a quiet corner for a relaxing coffee break, or a top class restaurant with an extensive menu, Harrogate has it all. Explore the town centre and outlying areas for amazing independent businesses you won't find anywhere else, with unique products and friendly Yorkshire service.

Take your time with a stay in one of our many hotels, guesthouses and B&Bs, and enjoy the beautiful attractions right on your doorstep. Add in the best Christmas lights in Yorkshire and the result is a fantastic destination for all your festive needs.

Find out more from:

Harrogate Tourist Information Centre
Open 9.30am to 5pm Monday-Saturday
and 11am to 2pm on Sunday 19th November

Royal Baths, Crescent Road, Harrogate, HG1 2WJ
T: 01423 537300
E: tic@harrogate.gov.uk
www.visitharrogate.co.uk

VISIT HARROGATE



HARROGATE CAR PARKING

Jubilee Multi-storey (HG1 1DJ) (444 Spaces, 16 Blue Badge)

'Pay on foot' operation. Lifts to all floors. 24hr toilets and baby changing facilities. Comprehensive CCTV system. Open from 7.00am-10pm (Sun-Weds) and Midnight (Thurs-Sat) (vehicles may be left overnight at no extra cost).

Victoria Multi-storey (HG1 5LQ) (786 Spaces, 27 Blue Badge)

'Pay on foot' operation. Lifts to all floors. Toilets and baby changing facilities. CCTV system. Open from 7.00am-7.30pm Mon-Sat, 10.00am-7.00pm Sunday (vehicles may be left overnight).

West Park Multi-storey (HG1 1HS) (343 Spaces, 4 Blue Badge)

Pay & display operation. Open from 7.15am-9.30pm Mon-Sat, 9.00am-7.00pm Sunday 19/11/17 (vehicles may be left overnight).

Dragon Road HGV/Pre-Booked Traders Only (HG1 5DB) (73 Spaces)

Holding area for exhibitors & contractors attending major events.

Montpellier (ground-level) (HG1 2RB) (56 spaces, 2 Blue Badge)

Pay & display operation.

Odeon Cinema (ground-level) (HG1 5LB) (85 spaces, 3 Blue Badge)

Pay & display operation.

Park View (ground-level) (HG1 5LZ) (72 spaces, 2 Blue Badge)

Pay & display operation.

Harrogate Christmas Market - Working with North Yorkshire Police to ensure a safe and secure event

Be vigilant. If you see anything suspicious, dial 999 or tell a member of staff / police present at the event straight away

ACT ACTION AGAINST COUNTRIES TERRORISM

COUNTER TERRORISM POLICING



What it means...

On-street parking in the Town Centre is restricted to marked bays for short stay only.

The inner zone is Pay & Display 7 days a week and the outer Disc Zone is free but you need to display a parking disc in your windscreen.

Discs are **free of charge** and available from local shops, hotels, tourist information, Council offices and the Christmas Market Information Point.

Take note of the time limit, this varies throughout the town centre.

The town centre is divided into zones, you may not park in the same zone more than once during any 24hr period.

Blue badge holders can park for free in on-street pay and display parking zones and in Council car parks without time limit or fee.



DISC ZONE
2 Hours
No return within 24hrs
ZONE N1

A61 from Ripon

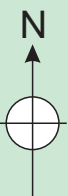
A59 From York & A1N

A661 From Wetherby & A1S

A61 from Leeds

A61 from Ripon

- Key**
- Pedestrian Routes to see the Christmas Lights
 - Pay & Display
 - Tourist Information
 - One-Way Street (Arrow indicates direction of flow)
 - Cash Machines
 - No.36 Bus Stops Leeds-Harrogate-Ripon
 - Courtesy Shuttle Bus Route



Approx Scale (m)
0 100 200



Travel to Harrogate:

Direct rail services from Leeds and York to Harrogate's bus and rail interchange. www.northernrailway.co.uk

The No 36 bus runs to Harrogate frequently from Leeds and Ripon. Other buses run from Jennyfields, Knaresborough, Pannal Ash, Pateley Bridge & Wetherby.

www.harrogatebus.co.uk

FREE Christmas Market Shuttle Bus running every 10 minutes each day from 10am to 8pm Thurs-Sat 10am to 5pm Sunday

From Harrogate Rail & Bus Station: Stand No 1

From Market Entrance 2 near Crown Roundabout



CELEBRATIONS | FUNCTIONS | CONFERENCES | TRAINING FACILITIES

TEL: 01423 567755 | WWW.CROWNHOTELHARROGATE.COM
CROWN PLACE, HARROGATE, NORTH YORKSHIRE, HG1 2RZ

Visit the FAQ section of our website for more info: www.HarrogateChristmasMarket.org/faqs

